

## 2' Slim Line series special notes:

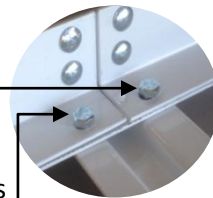
- When installing Rail Connectors ensure:



The nuts on the carriage bolts are facing out - smooth rounded heads face inward

- Do NOT install carriage bolts on the center (2) bolts on the bottom of the rail connectors
  - You will use these (2) empty holes to install the stiffeners, to support and attach the grids in a later step

- Use Hex-head 5/16" x 3/4" bolts for installing stiffeners



- Leave the perimeter loose until stiffeners are in place and begin installing grids